

LEDinspect HEADTORCH250

Inspectionlights



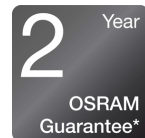
Motion Sensor Activation
Easily control light during hands free use



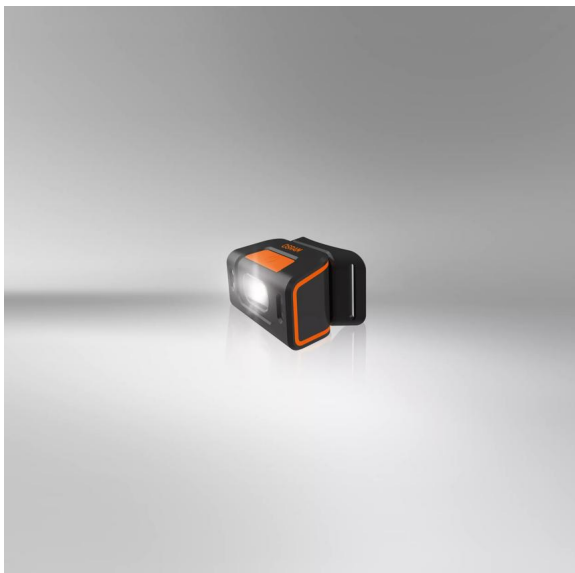
250 Lumen
Two light functionsHigh: Up to 250 lmLow: Up to 140 lm



60° Flex
Adjustable light angle to get the light to the desired position



2-year-OSRAM guarantee*
Systematic quality assurance measures underpin the premium workmanship and functionality of our products. Innovative technology and excellent quality really pay dividends for our customers.



Light is versatile

This high-quality headtorch from OSRAM is perfect for professional and private use. With two light functions - high up to 250lm and low up to 140lm, there is a light output to suit a wide variety of tasks. The integrated motion sensor technology allows for hassle-free, hands-free working and the option for the 60° tilt angle provides flexibility to give light where needed. The rechargeable battery allows up to 3.5h of operation at high power or up to 6h at low power. A USB Type-C charging cable is included in the scope of supply. In accordance with IP54 protection rating, this headtorch has protection against ingress of particles and against splashing water and is tested for impact resistance

in accordance with IK08. The LEDinspect HEADTORCH 250 has soft pads inside and additionally an adjustable strap for optimal wearing comfort and is therefore ideal as a light for craft activities, car repairs and in everyday life. In addition, OSRAM grants a 2-year guarantee*

Technical data

Product information

Application (Category and Product specific)	LED inspection lights
---	-----------------------

General Product Information

Global order reference	LEDIL404
------------------------	----------

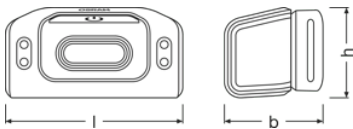
Electrical Data

Nominal wattage	5 W
Nominal voltage	3.7 V

Photometric Data

Color temperature	5700 K
Nominal luminous flux	250 lm
Light color LED	White

Physical Attributes & Dimensions



Product weight	105.00 g
Length	67.0 mm
Width	42.0 mm
Height	45.0 mm

LED module information

Number of LEDs per module	1
---------------------------	---

Colors & materials

Base color	Black / Orange
------------	----------------

Lifetime Data

Guarantee	2 years
-----------	---------

Additional product data

Type of Battery	Rechargeable
Number of included batteries	1
Scope of battery	Yes
Battery	High-quality lithium-ion battery

Capabilities

Technology	LED
------------	-----

Certificates & standards

Standards	CE / EMC / MSDS / ROHS
IK Class	IK08

Logistical data

Watt hour per battery	16.70
-----------------------	-------

Environmental & Regulatory Information



Information according Art. 33 of EU Regulation (EC) 1907/2006 (REACH)	
Candidate list substance 1	Lead
CAS No. of substance 1	7439-92-1
Safe use instruction	The identification of the Candidate List substance is sufficient to allow safe use of the article.
Declaration no. in SCIP database	bdeca20c-87d7-47fc-a8d4-ed431387b196

Logistical Data

Product code	Product description	Packaging unit (Pieces/Unit)	Dimensions (length x width x height)	Volume	Gross weight
4062172354875	INSPECTION LAMP	Folding carton box 1	80 mm x 53 mm x 98 mm	0.42 dm ³	134.00 g
4062172354882	INSPECTION LAMP	Shipping carton box 6	180 mm x 179 mm x 120 mm	3.87 dm ³	928.00 g

The mentioned product code describes the smallest quantity unit which can be ordered. One shipping unit can contain one or more single products. When placing an order, for the quantity please enter single or multiples of a shipping unit.

Download Data

File	
	User instruction LEDinspect HEADTORCH 250
	User instruction GPRS_Safety symbols instructions

Legal advice

Application advice:

For more detailed application information and graphics please see product datasheet and user instruction.*for precise conditions please refer to:

www.osram.com/am-guarantee

Application advice

For more detailed application information and graphics please see product datasheet.

Disclaimer

Subject to change without notice. Errors and omission excepted. Always make sure to use the most recent release.

