

Lightbar WL VX125-WD



Wide Beam Pattern

For a large-area and wide light distribution



Up to 48 m long beam

See and be seen with OSRAM



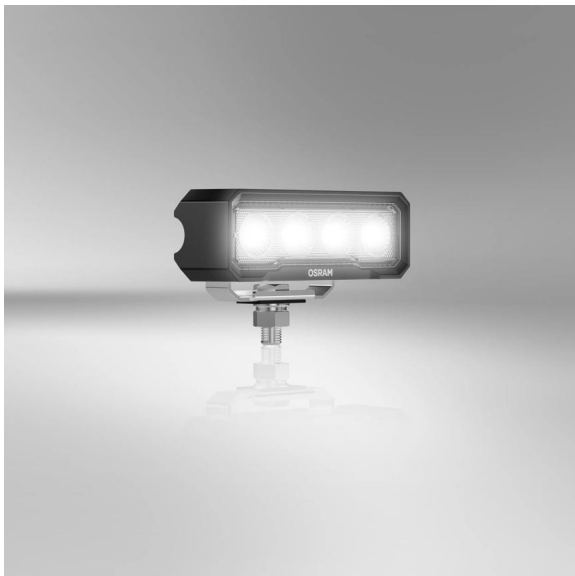
2 in 1: Front and rear application

Matched to individual requirements and needs for versatile applications



IP & IK protection classes

Tested and validated in a DIN-certified environmental simulation laboratory



Powerful LED working lights

Experience exceptional visibility with the OSRAM LEDriving Lightbar WL VX125-WD – a compact, powerful wide beam LED working light that combines affordability with performance, quality and durability. Designed to meet diverse tasks, the working light impresses with a luminous flux of up to 1500 effective lumens and a wide beam pattern with a light beam up to 48 meters. Emitting a color temperature of up to 6000 Kelvin and equipped with 4 high-performance OSRAM LEDs, the working light delivers consistent and reliable brightness, significantly enhancing safety at work for you and others.

Built for durability, the working light features a robust aluminum housing and a shatterproof polycarbonate lens. It withstands harsh environmental conditions such as dust, water, impacts, extreme temperatures and vibrations, meeting IP6K8 and IP6K9K standards verified in a certified environmental simulation laboratory. Versatile in its application, this LED working light is an effective addition to trucks, construction machinery, agricultural and commercial vehicles, as well as off-road vehicles. In addition, it is ECE R148 approved for use as a reversing light. Whether on the farm, on-site, or in the wilderness, the OSRAM LEDriving Lightbar WL VX125-WD is a reliable and efficient lighting solution that enhances performance and safety in challenging conditions¹⁾. OSRAM provides a 2-year guarantee²⁾.

Product datasheet

Technical data

Product information

Product legal advice 1	1) Additional working lights without ECE approval for use as work lights are approved for use on any vehicle according to German Road Traffic Licensing Regulations (StVZO) §52 (7). However, they must not be used and switched on while driving. In addition, individual special regulations, and laws of countries outside Germany must be observed.
Product legal advice 2	2) For precise conditions please refer to: www.osram.com/am-guarantee
Application (Category and Product specific)	Working light application

General Product Information

Global order reference	LEDWL115-WD
-------------------------------	-------------

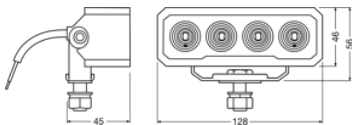
Electrical Data

Nominal voltage	12/24 V
Nominal wattage	18 W
Test voltage	13.2 V

Photometric Data

Nominal luminous flux	1500 lm
Color temperature	6000 K
Light distance at 1lx	48 m

Physical Attributes & Dimensions



Product weight	419.00 g
Length	128.0 mm
Width	45.0 mm

Product datasheet

Height	56.0 mm
--------	---------

Lifetime Data

Lifespan Tc	> 5000 hr
Guarantee	2 years

Additional product data

Connector to lamp	Open wire
-------------------	-----------

Capabilities

Technology	LED ¹⁾
------------	-------------------

¹⁾ Light-emitting diode application

Certificates & standards

ECE category	
Approval marks – approval	E9 approval
Type of protection	IP6K8/IP6K9K
Standards	ECE R10 / R148

Logistical data

Commodity code	85122000900
----------------	-------------

Environmental & Regulatory Information

Information according Art. 33 of EU Regulation (EC) 1907/2006 (REACH)	
Candidate list substance 1	Lead
CAS No. of substance 1	7439-92-1
Safe use instruction	The identification of the Candidate List substance is sufficient to allow safe use of the article.
Declaration no. in SCIP database	b6ce884d-3054-4cb8-b789-20cb35249d48



Logistical Data

Product code	Product description	Packaging unit (Pieces/Unit)	Dimensions (length x width x height)	Volume	Gross weight
4062172419826	Lightbar WL VX125-WD	Folding carton box 1	172 mm x 64 mm x 89 mm	0.98 dm ³	470.00 g
4062172419833	Lightbar WL VX125-WD	Shipping carton box 12	362 mm x 212 mm x 209 mm	16.04 dm ³	6005.00 g

The mentioned product code describes the smallest quantity unit which can be ordered. One shipping unit can contain one or more single products. When placing an order, for the quantity please enter single or multiples of a shipping unit.

Product datasheet

Download Data

File	
	User instruction GPRS_Safety symbols instructions
	User instruction LEDriving LIGHTBAR WL VX125-WD

Safety advice

For detailed application information, please refer to the product data sheet and the user instruction

Legal advice

1) Additional working lights without ECE approval for use as work lights are approved for use on any vehicle according to German Road Traffic Licensing Regulations (StVZO) §52 ⁽⁷⁾. However, they must not be used and switched on while driving. In addition, individual special regulations, and laws of countries outside Germany must be observed.2) For precise conditions refer to: www.osram.com/am-guarantee

Application advice

For more detailed application information and graphics please see product datasheet.

Disclaimer

Subject to change without notice. Errors and omission excepted. Always make sure to use the most recent release.

OSRAM